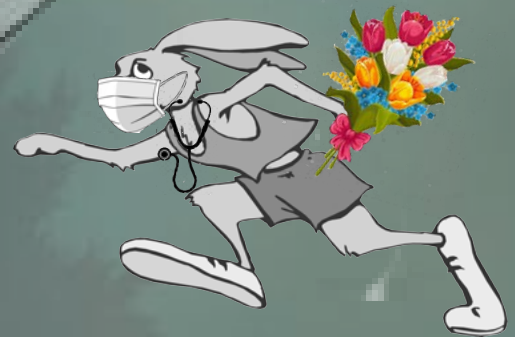


# ALCA



**\*\*\* ALCA HOSTS \*\*\***  
**THE NEW NORMAL**  
**TWO LURE FIELD TRIALS**  
**&**  
**ONE FIELD TRIAL**  
**CONFORMATION SHOW**



**SATURDAY, SEPTEMBER 5, 2020**

**SUNDAY, SEPTEMBER 6, 2020**

**LURE FIELD TRIAL ENTRY**

**LIMITED TO 65 HOUNDS**

# COVID-19 RULES AND PROCEDURES

The Alberta Lure Coursing Association is excited about taking on the challenge of holding CKC Lure Trials and a Field Trial Conformation Show during this 2020 pandemic. We are absolutely committed to offering you a safe event and will follow Alberta Government guidelines regarding gathering limits, physical distancing, temperature testing and the wearing of face masks.

**IMPORTANT:** Please read and agree to all rules and guidelines regarding this event. By submitting entries to these Lure Trials and Field Trial Conformation Show you are declaring that you agree to the following strictly enforced rules and regulations. Please do not enter if you have personal or political reasons for not respecting what we must do to abide by the Alberta Government Covid-19 protocol to keep us all safe.

**PRE-SCREENING:** All exhibitors, volunteers, ALCA members, and judges will be subject to a pre-screening survey and temperature check using a non-contact forehead thermometer at check-in before being allowed on the grounds. The survey is verbal in nature and we will NOT collect or record any personal information. We reserve the right to deny access to anyone without proof of entry of an exhibit. All exhibitors will be required to check in at the gate and proof of entry may be required to enter – please print and bring your receipts!

**PARKING & EXHIBITOR BENCHING:** Parking will be designated in accordance with social distancing guidelines and will be assigned as you arrive. Please inform the Field Trial Secretary by Closing Date (August 31<sup>st</sup>) if you have mobility issues that require special parking arrangements. Exhibitor benching will be at the vehicle parking site. Pop-Up tents may be set up in your space if needed. Because of Covid-19 Safety Rules - Exhibitors are requested to be self-sufficient while on the grounds. We will not be offering a concession; however, we will be having a Pig Roast at lunch on Saturday. Caterers will serve food on disposable plates and will meet Covid requirements. Seating will be 'bring your own' and social distancing will be required.

**MASKS:** This is an outdoor event. Masks are required 100% of the time in the Field Trial Secretary's area, at the line when your dog is coursing, at the concession and in the ring. Masks are strongly encouraged at all other times **REGARDLESS** if you can or cannot social distance. We request that you bring your own mask, however, masks are available at the venue.

**SOCIAL DISTANCING:** Social Distancing must be diligently practiced, and all exhibitors will follow the direction of ALCA volunteers, Secretary, Chair and Stewards at all times. Wins are exciting but please ... no hugs or high-5 celebrations outside your bubble!

**ROLL CALL PROCEDURES:** Social distancing & Mask protocols are mandatory. Hounds to be gaited to check for soundness and adequacy of equipment for Field Trial Committee without breaching the social distance guidelines. ALCA will provide tissues and designated waste receptacle so that owners can swab females to demonstrate that they are not in season.

**HAND WASHING STATIONS:** Hand washing stations and hand sanitizer will be available to exhibitors and volunteers throughout the grounds – **USE THEM REGULARLY**. The hand sanitizer provided on judge's table is for use of the judge and ring steward **ONLY**.

**BE SELF SUFFICIENT:** Please remember to bring personal face coverings, hand sanitizer, gloves, cleaning wipes, etc. for your own personal use.

**SHOW:** Numbers will be available for pick up at the ring – in order to help the process go smoother... **KNOW YOUR ARMBAND NUMBER WHICH WILL BE LOCATED ON YOUR dogshow.ca ENTRY CONFIRMATION** once the judging schedule is available. There will be no community catalogue at ring side. Social Distancing must be practiced, and all exhibitors will follow the direction of the steward, judge and show staff. Ring-side seating will be allowed but social distancing must be respected. The ring will have a separate entrance and exit. Please use as intended. Do not congregate or block ring entrance and exit.

**VOLUNTEERING:** Hosting this event in these times will require additional volunteers. We have designated breed running order so that everyone can take a shift volunteering to keep our venue safe and to ensure that Covid Protocols are maintained. We appreciate all volunteers – it takes a community to keep us all safe.

**THERE WILL BE A ZERO TOLLERANCE POLICY ON COVID-19 VIOLATIONS, INCLUDING NOT WEARING A MASK OR NOT SOCIAL DISTANCING WHEN IT IS POSSIBLE. DEPENDING ON THE LEVEL OF THE VIOLATION, YOU MAY GET A FRIENDLY REMINDER OR YOU MAY BE ASKED TO PACK YOUR STUFF AND LEAVE IMMEDIATELY. ENTER THIS EVENT AT YOUR OWN RISK** We ask all our Volunteers and Exhibitors to make their own health and safety a priority. **NO ONE** who is feeling ill, or showing signs of illness, or who has been exposed to someone who is ill should be attending this show or going out in public. Anyone with a probable case of illness shall utilize the on-line assessment tools and health link services to determine their risk and necessary precautions. **AGAIN** - Please be **DILIGENT – DO NOT** attend this event if (in the last 14 days before the show date):

- You have traveled outside of Canada
- You, your child or a cohort have had close unprotected contact with someone who is ill
- You, your child or cohort have been in close unprotected contact with someone who is being investigated, or confirmed to be a case of COVID-19
- **DO NOT ATTEND** if you are experiencing any of the following symptoms:  
Fever, Difficulty Breathing, Persistent Cough, Sore Throat, Runny Nose

**PLEASE NOTE:** Exhibitor entry information can be used for contact tracing efforts upon request of the Alberta Government. Information about attendees will only be requested by AB Health if a potential exposure occurs on site. All Albertans must follow CMOH Order 05-2020, which establishes legal requirements for quarantine and isolation. • Anyone with symptoms of COVID-19; with a history of international travel in the last 14 days; or with close contact with a confirmed case of COVID-19 in the past 14 days must remain at home. **IMPORTANT FOR YOU TO KNOW** If there are changes to the Alberta Government or Strathcona County protocols and our show must be cancelled all entry fees will be refunded (less c/c service charges).

*Official Premium List*



ALBERTA LURE COURSING ASSOCIATION

**Saturday September 5, 2020**  
**LURE FIELD TRIAL**  
**&**  
**FIELD TRIAL CONFORMATION SHOW**

**Sunday September 6, 2020**  
**LURE FIELD TRIAL**

(Outdoors)

These Events Held Under the Rules of the Canadian Kennel Club

To Be Held At:

Bremner House

53452 Rge Rd 225, Sherwood Park, AB T8A 4V3

Co-Ordinates: Lat 53 deg, 36', 30.0" N Long —113 deg, 13', 29.0" W

**Mail ALL Entries To:**

**Miriam Woestenburg,**

**12927-78 St. Edmonton, Ab T5C 1G6**

**(780) 456-2866**

**E-mail: [minidragon@shaw.ca](mailto:minidragon@shaw.ca)**

Secure on-line entry service available at

[www.dogshow.ca](http://www.dogshow.ca) (VISA, Mastercard, American Express & Interac)



**Lure Field Trial + Conformation Entries Open: Sunday, August 23, 2020**  
**Lure Field Trial + Conformation Entries Close: Monday, August 31, 2020**  
**Puppy Stake + Veteran Stake (Sunday) Close: Thursday, September 3, 2020**

**Due to Covid-19 Protocols, we will not be accepting Post Entries for these events.**

**ENTRIES LIMITED TO 65 IN REGULAR STAKE EACH DAY**

## ROLL CALL TIMES AND RUNNING ORDERS:

We are offering a Rolling inspection between the time you arrive and Roll Call.

**Roll Call for Official Classes:**

9:00 a.m.

**Roll Call for Puppy & Veteran Stakes (Sunday):**

After Preliminary runs

**Field Trial Conformation Show will begin within ½ hour of field trial ribbon ceremony.**

Puppy Stake & Veterans Stakes **Sunday only:** will be run after preliminary runs

Best in Field will be run on Sunday only. Best of Breed and Mixed Stake winners from both Saturday & Sunday are eligible for Best In Field.

**Run Order Both Days: Afghan, Azawakh, Basenji, Borzoi, Deerhound, Ibizan, Irish Wolfhound, Pharaoh, Rhodesian Ridgeback, Saluki, Italian Greyhound, Greyhound, Whippet, Mixed.**

## ENTRY FEES:

### FIELD TRIAL CONFORMATION SHOWS

Entry (entries close Monday, August 31<sup>st</sup>) \$25.00

**Hound must earn a qualifying score in the field trial to participate in the show**

### LURE COURSING FIELD TRIALS

**First hound** (entries close Monday, August 31<sup>st</sup>) \$22.00

Additional hound same household \$20.00

**\*TCN (Temporary Competition Number) Fee per event per dog** \$10.50

### Post entries will not be accepted for this event

Puppy Stake, Veteran Stake (Sunday) \$ 5.00

Breeder Stake, Kennel Stake, Club Stake (Sunday) \$ 5.00

### PIG ROAST **\*\*Must be reserved by Monday, August 31st\*\***

Adult \$20.00

Under 12 years \$ 8.00

\*TCN – Temporary Competition Number MUST be obtained from the CKC prior to entering any CKC event. TCN's will replace the previous system of entering events with dogs as 'listed' and will allow dogs to temporarily participate in CKC events while they pursue permanent registration or an Event Registration Number (ERN).



# Dog Show<sup>TM</sup>.ca

## ENTER ONLINE @ [WWW.DOGSHOW.CA](http://WWW.DOGSHOW.CA)

TOLL FREE FAX: 1-877-99-ENTRY (36879)



A service charge of 10% will be assessed. This includes entries sent online, by fax or post using a credit card or Interac for payment.

**LURE TRIAL OFFICIAL STAKES:**

**Open Stake** - for all eligible hounds, including Field Champions.

**Mixed Stake** - if there are multiple breeds with entries of three or less, upon agreement of all owners, they will be combined in a Mixed stake.

**CONFORMATION SHOW CLASSES:**

**Juvenile** – for dogs 12 to 18 months

**Bred by Exhibitor** – for dogs owned and handled in the ring by the breeder

**Open** - for all eligible lure coursing breeds

**Specials Only** - for Canadian Champions only

**Altered** – for dogs that have been spayed or neutered by veterinary procedure.

**NOTES:**

**Hounds must be entered in the Open or Mixed Stake of the lure trial to participate in the Field Trial Conformation Show. As per CKC rule 1.2.2 Only those hounds that have competed in the Open or Mixed Stake and obtained a qualifying score may compete in the conformation show.**

**LURE TRIAL UNOFFICIAL CLASSES:**

**Best in Field** – Sunday - Best of Breed and Mixed Stake winners from both days are eligible to participate

**Puppy Stake** (6-9, 9-12, 12-18 months) Sunday after completion of preliminary runs – dogs are run singly over a shortened course.

**Veteran Stake** (Unofficial) – (dogs 7 years and older) Sunday after completion of **Puppy Stake** – dogs are run singly over a shortened course.

**Kennel Stake, Breeder Stake** - Sunday - 2 dogs, determined by score adjusted for judges’ average.

**Club Stake** - Sunday - 3 dogs, top 2 scores adjusted for judges’ average.

Combinations for Kennel, Breeder & Club Stake to be named before first course runs on Sunday

**LURE COURSING JUDGES & ASSIGNMENT**

**CONFORMATION JUDGES & ASSIGNMENTS**

**Jocelyne Gagne**, Welland, Ontario  
All breeds + Mixed Stake: Both days  
& BIF Sunday

**Tom Robinson**, Kelowna, British Columbia  
Sat: Whippets, Greyhounds, Italian Greyhounds  
Sun: All breeds except Whippets + BIF

**Barbara (Bobbi) Westman**, Edmonton, Alberta  
Sat: All breeds except Whippets, Greyhounds, Italian GH  
Sun: Whippets

**All Official and Unofficial classes**  
**Saturday, September 5th:**

**Jocelyne M. Gagné**  
Welland, Ontario



Official Vet for the event is PulseVet 780-570-9999

<https://pulseveterinary.ca/#:~:text=Pulse%20Veterinary%20Specialists%20and%20Emergency%20is%20a%20brand,are%20conveniently%20located%20just%20off%20Anthony%20Henday%20Drive.>

# Our Judges

## Jocelyne M. Gagné

**All Breed Judge / Lure Field Trial Judge  
Starkeeper Perm Reg'd Irish Wolfhounds**



In 1978 I acquired my first Irish Wolfhound. Leland started me on my journey of learning about wolfhounds, sighthounds, and the dog world. She kindled my passion for this breed that has grown and strengthened over 40 years.

The first Starkeeper litter was born in 1980. Since then I have produced over 140 Irish Wolfhound show champions, obedience & rally titlists, lure coursing and racing champions in Canada, the USA, Italy and Australia. The four wolfhounds in my home today go back to my original hounds. I don't breed frequently, usually when I am ready to add a puppy to my home.

I am committed to breeding Irish Wolfhounds that are both typical examples of the breed and can perform in the field. As a judge I strive to recognize dogs that are functional. I am both a Lure Field Trial Judge and all breed Conformation judge, approved by the Canadian Kennel Club for all breeds, and by the American Kennel Club and the FCI for several additional breeds. The Kennel Club (England) has approved me to award CC's to Irish Wolfhounds.

Over the years I have owned Scottish Deerhounds and co-owned a whippet with my daughter. Given the amount of time I spent on the field, in my home and the show ring with sighthounds, I consider myself a sighthound specialist. I look forward to judging the Alberta Lure Coursing Association Sighthound Specialty and am grateful for the invitation.

My judging assignments since 2000 have literally taken me around the world, and I have had the pleasure of going over some outstanding dogs in the course of my travels at both all breed and specialty shows. Through judging invitations I have travelled across Canada, the USA, Mexico, South America, United Kingdom, many countries in Europe, Russia, South Africa, Australia and New Zealand. I have been fortunate to judge Irish Wolfhound or sighthound specialties in most of these countries. It has also been an honour to have judged numerous other breed specialties around the world.

The dog world has provided me with ample opportunities and positive experiences in my areas of interest: dogs, travel and meeting interesting people!! In giving back to the sport that has so enriched my life, I have developed a form and function educational presentation on the Irish Wolfhound that I have delivered to owners, judges and breeders in many countries. I have contributed to the current Illustrated Standards for Irish Wolfhounds sponsored by the Irish Wolfhound Club of America and the Federation of Irish Wolfhound Clubs in Europe.

Currently I am serving in my second term as President of the Irish Wolfhound Club of Canada. For several decades I have been the performance chairperson for the IWCC organizing specialty lure coursing and racing events for Irish Wolfhounds.

I live in Welland Ontario with my two adult children. After over 40 years I am still active in breeding and exhibiting Irish Wolfhounds and have had many successes in performance events, all breed and specialty rings with my hounds. So I know what its like to be judged, as well as doing the judging.

## Tom Robinson



Hi, my name is Tom Robinson. I entered the dog world in 1972 with the arrival of a very special wedding present called Thomas – a purebred Saluki. In 1977 we were introduced to lure coursing.

Over the many years of enjoyment with Thomas we get involved with the Foothills Gazehound Club in Calgary where in 1980 I started to judge the various sighthound breeds. At that time there were seven breeds. As time and circumstances progressed I became a Director for the Canadian Sighthound Field Association for Alberta.

Throughout this period I continued to judge and on occasion run the lure for the coursing events. In 2012 after suffering a life threatening illness I had to take a number of years off in order to regain my health. However you can't keep an old dog down so in 2016 I was able to return to the field and continue with my judging events. Although we no longer own a sighthound both my wife and I enjoy being involved with this community through the Whippet Club of BC and look forward to many more years of coursing with good friends and neighbours.

## Barbara (Bobbi) Westman



Live what you love! I have lived with great hounds, a welcoming lure coursing community and have tasted the best of well-crafted spirits!

Thank you for the opportunity to judge at this Lure Coursing Trial.

This is an honor to be considered for this assignment and a privilege to see the next generation of young hounds enter into the sport.

My name is Barbara (Bobbi) Westman, and I have been breeding and exhibiting dogs since the early 1980's. My initial breed was Springer Spaniels, which turned into Lhasa Apso and hounds shortly after that. In 2009, I was exposed to Italian Greyhounds and developed an affection for this curious, tough little hound.

San was my first IG and the first in Canada to gain a Lure Coursing Field Championship X. He taught me about courage of the heart, the love of the chase and how to be a competitor! He had a profound effect on the lure coursing community and lead the way so other IGs could get in the game.

I have apprenticed and professionally handled in the toy, hound, terrier, herding, sporting, and working groups.

I have dedicated my life to the sport of purebred dogs as a handler, breeder, performance enthusiast and as a participant, and since 2015 as a CKC lure coursing Judge.





## PRIZES AND AWARDS:

### Conformation Show

Rosette & prize: Best of Breed, Best Opposite Sex, Best of Winners  
 Best in Field Trial Conformation Show,  
 Best Altered in Field Trial Conformation Show  
 Rosette: Select, Winners, Reserve Winners  
 Ribbon: all class placements

### Field Trial

Rosette & prize: Best in Field, Best of Breed, 1<sup>st</sup> in Mixed  
 Rosette: 2<sup>nd</sup> to NBQ, Best Puppy in Field, Best Veteran in Field,  
 Ribbon: 1<sup>st</sup> to NBQ in each puppy class  
 Ribbon: for **qualifying score** earned by a hound which has not previously earned the Novice  
 Courser title. **Please notify Field Trial Secretary if you hound qualifies.**

### New Title Rosettes

ALCA is pleased to offer a Club Rosette for each hound completing a coursing or conformation  
 title at this event. **Please notify Field Trial Secretary if your hound has completed a new title.**

### ANDARE AGGREGATE AWARD

ALCA is pleased to offer a rosette and prize to the hound with the highest aggregate score for trial and  
 show. The winner of this award will be determined by adding each hound's coursing score to a score  
 assigned by the conformation judge. In the event of a tie, the higher coursing score will determine the  
 winner. The winning hound's name will be engraved on a plaque on the Andare Perpetual Trophy.

### 2020 COURSING AGGREGATE AWARD

**DUE TO THE COVID-19 PANDEMIC HIATUS  
 THE ALCA AGGREGATE AWARD WILL NOT BE OFFERED FOR  
 THE 2020 COURSING SEASON**

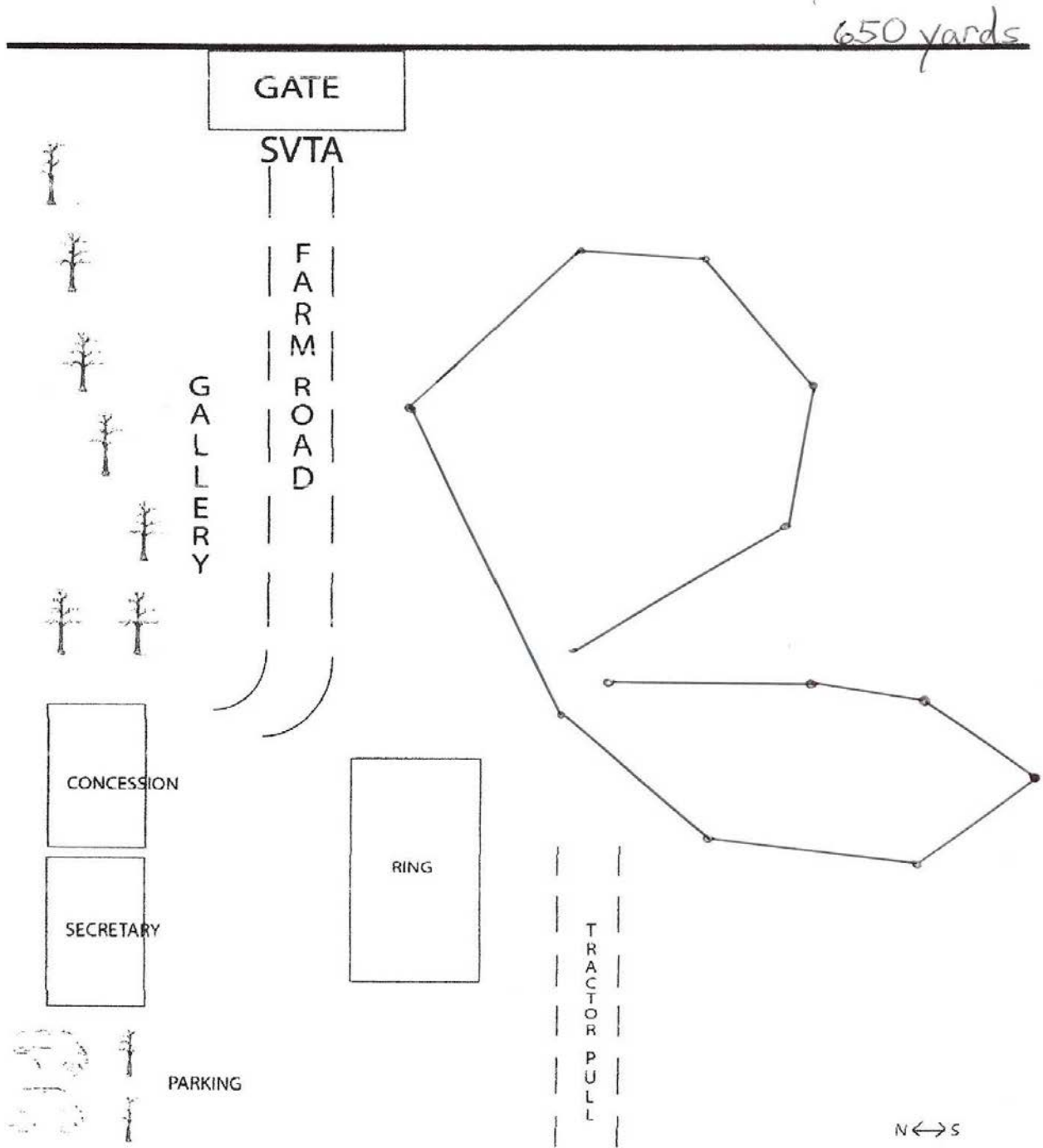
FIELD TRIAL COMMITTEE AND OFFICIALS		ALBERTA LURE COURSING ASSOCIATION 2020 EXECUTIVE		CONFORMATION COMMITTEE AND OFFICIALS	
Field Trial Chair	Ed Molloy	President	Bobbi Westman	Show Chairman	Cindy Kremer
Field Trial Committee:	Ed Molloy Cherie Hunchak Cindy Kremer Piet Woestenburg Ivy Molloy	Vice President	Brendan Molloy	Show Committee	Cherie Hunchak Bobbi Westman Ed Molloy
Field Clerk Nevidka Algu	Ivy Molloy	Secretary	Cindy Kremer	Chief Ring Steward	Cindy Kremer
Field Trial Secretary	Miriam Woestenburg	Treasurer	Ivy Molloy	Show Secretary	Miriam Woestenburg
Lure Operators	Cherie Hunchak Ed Molloy				
Hunt Master	Brendan Molloy Piet Woestenburg				
COMPLAINTS COMMITTEE: Ed Molloy, Cherie Hunchak, Cindy Kremer, Miriam Woestenburg, Piet Woestenburg				Ed Molloy, Cherie Hunchak, Cindy Kremer, Bobbi Westman	

### ATTENTION:

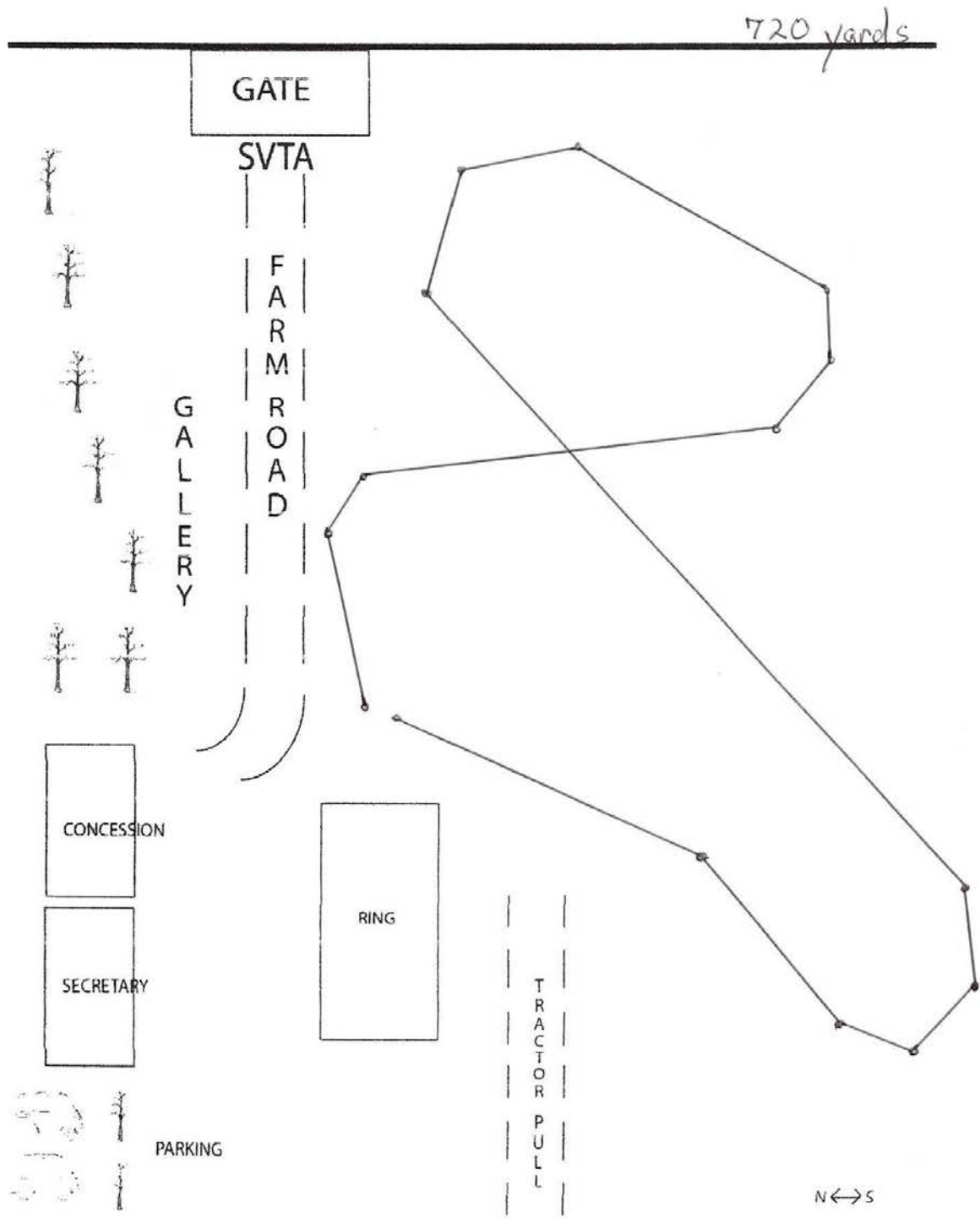
It shall be the obligation of the trial-giving club to see that a judge, club official, volunteers  
 or any participant at the CKC any infringement of this regulation and the Discipline  
 Committee shall have the authority to take such action as it deems fit on the receipt of a  
 report indicating that this has occurred.



Saturday



Sunday



## **CANADIAN KENNEL CLUB OFFICIALS:**

THE CANADIAN KENNEL CLUB EXECUTIVE DIRECTOR

Mr. Lance Novak, 200 Ronson Drive, Suite 400, Etobicoke, ON, M9W 5Z9 (416) 675-5511

THE CANADIAN KENNEL CLUB DIRECTOR FOR ALBERTA

Sharon Derrick Email: [sderrick@shaw.ca](mailto:sderrick@shaw.ca)

THE CANADIAN KENNEL CLUB DOG SHOW REPRESENTATIVE FOR ALBERTA (CONFORMATION)

Tina Gaudet Email: [gtguadet@shaw.ca](mailto:gtguadet@shaw.ca)

ALBERTA LURE COURSING REPRESENTATIVE

Ed Molloy Email: [andare@syban.net](mailto:andare@syban.net)

## **DIRECTIONS TO THE FIELD**

This field is northeast of Sherwood Park. Shopping, gas & coffee are less than **10** min away.

**Entrance to field has SVTA in big letters over the gate.**

**From South:** Hwy 21 north to Township Road 534 (first north of Hwy 16) Turn right/East on Township Road 534 to Range Road 225 (approx. 2 km) Turn left/north on Range Road 225. Field is 1/2 km north of Twp Rd 534 on left.

**From East:** Hwy 16 West to Range Road 225 Turn right/north on Range Road 225. Field is approx. 4 km north of Hwy 16 on left.

**From West:** Hwy 16 East through Sherwood park to Range Road 225 Turn left/north on Range Road 225. Field is approx. 4 km north of Hwy 26 on left.

## **EQUIPMENT AND FIELD CONDITIONS**

This field is a mown hay field, flat on the west side, sloping towards the road. An electric drag will be used.

## **CONDITIONS AND INFORMATION**

- Rolling inspection — check in for inspection as you arrive, with your dog(s). It is your responsibility to take your dog for inspection prior to roll call.
- Lure Coursing is a strenuous athletic pursuit that requires your dog to be in excellent condition. Your dog relies on you to ensure this.
- All hounds will be run in trios or braces, twice, unless excused, dismissed or disqualified.
- Hounds not present at roll call will be scratched, and their entry fee will NOT be refunded. No exceptions.
- All handlers MUST use a slip lead when releasing their hounds.
- Hounds may wear muzzles and/or catch collars at the owner/agent's discretion.
- Bitches in season and lame hounds will be excused and will have their entry fee returned if notice is given to the secretary **prior** to roll call.
- The Chair may excuse any hound from competition for any reason deemed justifiable.
- A \$10.00 fine, payable to ALCA, will be levied for any hound loose on the field at any time between Roll Call and the completion of Best in Field Trial Conformation Show.
- There is limited shade and no water available, so come PREPARED.
- There will be limited overnight camping. Please contact Ed Molloy to reserve your spot. (780) 922-5218.
- ALCA, its agents, members, representatives, volunteers, etc., assume no responsibility for any loss, damage or injury sustained by exhibitors, handlers, or to any of their dogs or property and further assumes no responsibility for injury to children or spectators.
- All rights to televise, videotape, advertise, photograph, promote or otherwise exploit this event are vested in the club, or in persons to whom assignments of such rights have been made in writing by the club. All persons and animals attending these shows grant the club the right to use their likeness and voice in any matter without further consent.

## **ALL RULES GOVERNING THESE EVENTS ARE AVAILABLE ON LINE FROM THE CANADIAN KENNEL CLUB**

<https://www.ckc.ca/en/Files/Forms/Shows-Trials/Event-Rules-Regulations/Lure-Coursing-Field-Trial-Rules-and-Regulations.aspx>



WE'S HAVING  
A PIG ROAST!!  
(Again)

JOIN US FOR SEPTEMBER 5TH  
FOR A PIG ROAST AT NOON!!

ADULTS \$20.00 KIDS 12 AND UNDER \$8.00  
PLEASE RESERVE BY AUGUST 31. PLEASE CONTACT  
MIRIAM WOESTENBURG AT MINIDRAGON@SHAW.CA !



ADULTS \$20 X \_\_\_\_\_

KIDS \$8 X \_\_\_\_\_

TOTAL \$ \_\_\_\_\_

INCLUDES ALL THE FIXINGS  
AND DESERTS !!!!!



Official Canadian Kennel Club Entry Form  
**Alberta Lure Coursing Association**  
2 LURE FIELD TRIALS  
and 1 FIELD TRIAL CONFORMATION SHOW  
 September 5 & 6, 2020



ENTER IN THE FOLLOWING CLASSES: One entry form per hound

CONFORMATION: Pre entries only  MALE  FEMALE  
 Juvenile 12-18 months  Open  Bred by Exhibitor  Specials only  Altered  
**(Dog must be entered in lure trial to enter show)**

<input type="checkbox"/> Field Trial Conformation Show: Saturday <input type="checkbox"/>	\$ 25.00 =
<input type="checkbox"/> Lure Field Trial: Saturday <input type="checkbox"/>	\$ 22.00 =
Sunday <input type="checkbox"/>	\$ 22.00 =
Each additional dog same household	\$ 20.00 =
<input type="checkbox"/> TCN (Temporary Competition Number) Per event, per dog	\$ 10.50 =
<input type="checkbox"/> Juvenile/Puppy Stake, Veteran Stake, Breeder Stake, Kennel Stake, Club Stake	\$ 5.00 =
<input type="checkbox"/> PIG ROAST: _____ Adult \$20 _____ Children \$8	\$ _____ =
Total \$	

Enclose \$ \_\_\_\_\_ for Entry Fees \$ \_\_\_\_\_ Listing Fees \$ \_\_\_\_\_ Other \$ \_\_\_\_\_  
 Visa  Mastercard  American Express  
 Card No. \_\_\_\_\_ Expiry \_\_\_\_\_ / \_\_\_\_\_

**CARDHOLDER NAME (PLEASE PRINT):**

Breed:	Call Name:	<input type="checkbox"/> Male <input type="checkbox"/> Female
--------	------------	---------------------------------------------------------------

Registered Name of Hound: \_\_\_\_\_

Check one & enter Number here:	Is this dog's first trial? Yes <input type="checkbox"/> No <input type="checkbox"/> If Yes, bring or attach Hound Certification Please separate my hounds <input type="checkbox"/>
--------------------------------	------------------------------------------------------------------------------------------------------------------------------------------------------------------------------------------

<input type="checkbox"/> CKC Reg. No.	Date of birth D _____ M _____ Y _____	Is this a puppy? Yes <input type="checkbox"/> No <input type="checkbox"/>
<input type="checkbox"/> CKC ERN No.	Place of Birth: Canada <input type="checkbox"/> Elsewhere <input type="checkbox"/>	Owner's CKC Membership No.
<input type="checkbox"/> CKC Misc.Cert.No.		
<input type="checkbox"/> CKC PEN No		
<input type="checkbox"/> TCN		

Breeder(s): \_\_\_\_\_

Sire: \_\_\_\_\_

Dam: \_\_\_\_\_

Reg'd Owner(s): \_\_\_\_\_ Email: \_\_\_\_\_

Owner's Address: \_\_\_\_\_

City:	Prov:	Postal Code:
-------	-------	--------------

Name of Owner's Agent (if any) at the Trial	Email
---------------------------------------------	-------

City	Prov	Postal Code
------	------	-------------

I CERTIFY that I am the registered owner(s) of the dog or that I am the authorized agent of the owner(s) whose name(s) I have entered above and accept full responsibility for all statements made in this entry. I CERTIFY that one of the owners has the CKC membership number listed above. In consideration of the acceptance of this entry, I (we) agree to be bound by the rules and regulations of the Canadian Kennel Club and by any additional rules and regulations appearing in the premium list.

**\*\*\*\*\*IDs will not be mailed – please supply email address for entry confirmation\*\*\*\*\***

Signature of Owner or Agent \_\_\_\_\_ Phone \_\_\_\_\_



## Alberta Lure Coursing Association - Accidental Waiver & Release of Liability Form

In consideration of the acceptance of this Alberta Lure Coursing Association (ALCA) membership and or individual practice/fun(s) runs, the holding of this event(s), official trials, and the opportunity to have the canine(s) run, I agree to hold the organizing committee, the organization which it represents, including its members, officers and directors, volunteers, owners of the premises upon which the event(s) is held and their employees, hold harmless from any claim for loss or injury which may be alleged to have been caused directly or indirectly to any person or thing by the act of this dog while in or upon the event premises, or grounds, or near any entrance thereto, and I personally assume all responsibility and liability for any such claim.

I further agree to hold the aforementioned parties harmless from any claim for loss of this dog by disappearance, theft, death, or otherwise, and from any claim for damage or injury, to be caused or alleged to be caused by negligence of the parties aforementioned, or by the negligence of any other person, or any other cause or causes.

I hereby assume the sole responsibility for and agree to indemnify the aforementioned parties hold harmless from any and all loss and expenses (including legal fees) by reason of the liability imposed by law upon any of the aforementioned parties for damage because of bodily injuries, including death at any time resulting there from sustained by any person or persons, including myself and my guest or on account of damage to property, arising out of or in consequence of my participation in this event, howsoever such injuries, death or damage to property may be caused or may have alleged to have been caused by negligence of the aforementioned parties or any of their employees or agents, or any other person.

I hereby consent to receive medical treatment, which may be deemed advisable in the event of injury, accident, and/or illness during this activity.

I understand while participating in this activity, I or my canine(s) may be photographed. I agree to allow my photo, video, or film likeness to be used for any legitimate purpose by the activity holders, producers, sponsors, organizers, and assigns.

The Accident Waiver and Release of Liability Form shall be construed broadly to provide a release and waiver to the maximum extent permissible under applicable law.

Name: \_\_\_\_\_ Phone: \_\_\_\_\_ Email \_\_\_\_\_

Name of Canine(s)

#1 \_\_\_\_\_ Any Canine Health Related Issues: \_\_\_\_\_

#2 \_\_\_\_\_ Any Canine Health Related Issues: \_\_\_\_\_

#3 \_\_\_\_\_ Any Canine Health Related Issues: \_\_\_\_\_

I certify that I have read this document and I fully understand its content. I am aware that this is a release of Liability and a contract and I sign it of my own free will.

Signature: \_\_\_\_\_ Date: \_\_\_\_\_ 2020

Signature of parent/guardian is required for children under 18 years