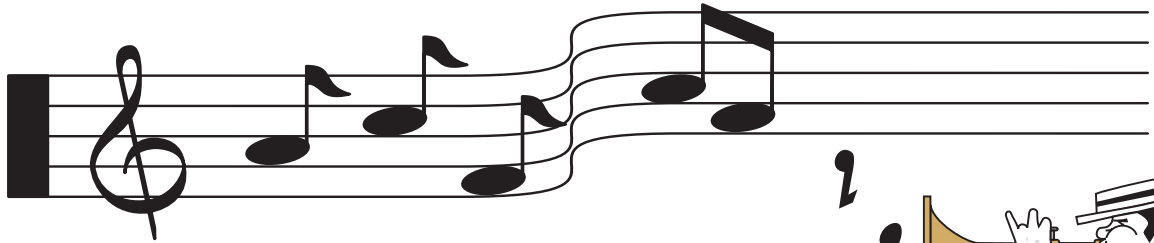


Official Judging Schedule

565122 B.C. Ltd. operating as the

AULD LANG SYNE DOG ASSOCIATION



Wednesday, Thursday
April 16 & 17 - 2014
All-Breed Championship Shows

Show Site
HERITAGE PARK
Lickman Road (Exit 116)
Chilliwack, B.C.
(Indoor Show)

This show is held under the rules and regulations of the Canadian Kennel Club.
(Unbenched) (Unexamined)

Printed by Western Dog Shows Ltd.

AULD LANG SYNE DOG ASSOC. SHOW TOTALS

| | Wed | Thurs. |
|--------------|------------|---------------|
| SPORTING | 55 | 64 |
| HOUNDS | 44 | 49 |
| WORKING | 66 | 75 |
| TERRIERS | 29 | 31 |
| TOYS | 73 | 68 |
| NON-SPORTING | 51 | 55 |
| HERDING | 35 | 45 |
| Sub-Totals | 353 | 387 |
| Puppy Sweeps | n/a | 21 |
| TOTAL | 353 | 408 |

This schedule is based @ 20 to 25 dogs per hour or 2.4 min per dog (Conformation)

**** R.V. PARKING AREA will be available for exhibitor/vendor arrival Tuesday, April 15, 2014 @ 1:00pm!!!!!!**

NOTE: As we are still an eco-friendly event, armband #'s (for the Auld Lang Syne Dog Assoc.) are issued once (from the Show Secretaries desk) and are used for each day that you are entered. Should your number become misplaced or damaged we will be more than happy to replace it for you. Pre-Order Catalogs MAY BE PICKED UP @ SHOW SEC'S DESK 90 min PRIOR TO THE COMMENCEMENT OF THE SHOW.

ALWAYS ALLOW YOURSELF ADDITIONAL TIME FOR ANY POSSIBLE ABSENTEES.

EXHIBITORS PLEASE BE SURE TO CLEAN-UP AFTER YOUR DOGS AT ALL TIMES.

Move up forms must be received by the Show Secretary at least ONE HOUR PRIOR to the opening of the show AND/OR Specialty show (not one hour prior to the start of your breed). A request to move-up from the classes to Specials only may be done in advance/in writing with the Show Secretary

Exhibitors with multiple breed entries - crates will be permitted ringside during the judging of your respective breed ONLY and MUST BE removed immediately following your breed judging. THANK YOU FOR YOUR COOPERATION

*** HALL 2 WILL BE PATROLLED BETWEEN 10pm and 6am each day**

SHOW BUILDING HOURS

Tuesday from 1:00pm to 10:00pm,
Wednesday/Thursday/Friday/Saturday/Sunday from 6:00am to 10:00pm, Monday from 6:00am to one hour following Best in Show judging.

REMINDER, MUNICIPAL BY-LAW THIS IS A NON-SMOKING VENUE (This applies to all areas of the Heritage Park venue) STRICTLY ENFORCED!!!!!!

*** DESIGNATED FIRE LANES MUST BE KEPT CLEAR AT ALL TIMES. STRICTLY ENFORCED!!!!!!**



AULD LANG SYNE DOG ASSOCIATION - WEDNESDAY – April 16th, 2014

| RING 2 (16) – MS A FRANCO (44) | | RING 3 (15) – MR B FRASER (66) | | RING 4 (8) – MS P BRUCE (35) | |
|-----------------------------------------|--------------------------|-----------------------------------------|-----------------------|-------------------------------------------|-------------------------|
| 9:00am | <i>(Hound Breeds)</i> | 9:00am | <i>Working breeds</i> | 9:30am | <i>(Herding breeds)</i> |
| 2 Basenji | 0-1-1-0 | 11 Rottweiler | 6-3-2-0 | 2 Australian Shepherd | 0-2-0-0 |
| 4 Beagle | 0-2-1-1 | 1 Mastiff | 1-0-0-0 | 8 Bouvier des Flandres | 3-2-2-1 |
| 2 Dachshund (MSL) | 0-1-1-0 | 2 Great Dane | 2-0-0-0 | 4 German Shepherd | 1-2-0-1 |
| 1 Dachshund (MSH) | 0-1-0-0 | 13 Doberman Pinscher | 0-7-3-2 | 1 Iceland Sheepdog | 0-0-1-0 |
| 1 Dachshund (SSH) | 0-0-1-0 | | 1Exh, 1Br | 2 Norwegian Buhund | 0-1-0-0 |
| 3 Dachshund (SWH) | 0-0-2-1 | 1 Cane Corso | 0-1-0-0 | | 1 Exh. |
| 3 Whippet | 0-3-0-0 | 1 Bullmastiff | 1-0-0-0 | 1 Polish Lowland Shpdg | 0-0-1-0 |
| 1 Pet.Bas.Grif.Vendeen | 0-0-0-1 | 4 Bernese Mtn Dog | 1-3-0-0 | 15 Shetland Sheepdog | 2-5-3-5 |
| 1 Drever | 0-0-1-0 | 2 Kuvaszok | 1-0-0-1 | 2 Welsh Corgi (Pem.) | 1-0-0-0 |
| 2 Saluki | 1-1-0-0 | 3 Portuguese Water Dog | 1-2-0-0 | 11:00am – HERDING GROUP | |
| 12 Rhodesian Ridgeback | 4-3-4-1 | 10:30am | | | |
| 1 Greyhound | 0-1-0-0 | 12 Boxer | 3-7-2-0 | | |
| 1 Finnish Spitz | 0-1-0-0 | 5 Newfoundland | 2-0-3-0 | | |
| 2 Deerhound (Scottish) | 1-0-0-1 | 2 Schnauzer (Giant) | 0-1-1-0 | RING 4 (13) – MS P BRUCE (29) | |
| 3 Coonhound (Blk/Tan) | 1-1-1-0 | 5 Schnauzer (Standard) | 2-2-0-1 | 11:30am | <i>(Terrier breeds)</i> |
| 10:45am – HOUND GROUP | | 3 Siberian Husky | 2-0-1-0 | 1 Airedale Terrier | 0-0-0-1 |
| | | 1 St.Bernard | 1-0-0-0 | 1 Border Terrier | 0-1-0-0 |
| RING 2 (16) – MS A FRANCO (55) | | 11:30am – WORKING GROUP | | 2 Cairn Terrier | 0-0-2-0 |
| 11:30am | <i>(Sporting breeds)</i> | | | 1 Fox Terrier (Wire) | 1-0-0-0 |
| 9 Weimaraner | 0-2-4-3 | RING 3 (17) – MR B FRASER (73) | | 1 Norwich Terrier | 0-0-1-0 |
| 1 Vizsla (Smooth) | 0-1-0-0 | 1:00pm | | 7 Schnauzer (Miniature) | 0-4-3-0 |
| 4 Pointer (GSH) | 2-2-0-0 | 1 Affenpinscher | 1-0-0-0 | - LUNCH BREAK - | |
| - LUNCH BREAK - | | 16 Cavalier King Charles | 5-5-4-0 | 1:00pm | |
| 1:00pm | | | 2 Exh. | 1 Scottish Terrier | 0-1-0-0 |
| 1 Barbet | 0-0-1-0 | 2 Chihuahua (LC) | 0-1-0-1 | 1 Sealyham Terrier | 0-0-0-1 |
| 1 Retriever (Ches.Bay) | 1-0-0-0 | 4 Chihuahua (SC) | 2-1-0-1 | 1 Soft Coated Wheaten | 0-0-1-0 |
| 3 Retriever (Flat Coat) | 0-2-1-0 | 2 Chinese Crested | 1-1-0-0 | 2 Staffordshire Bull Terrier | 0-1-1-0 |
| 5 Retriever (Golden) | 1-1-1-2 | 1 Coton de Tulear | 1-0-0-0 | 3 Welsh Terrier | 0-2-1-0 |
| 7 Retriever (Labrador) | 3-3-1-0 | 1 English Toy Spaniel | 0-1-0-0 | 7 West Highland White | 4-2-1-0 |
| 8 Retriever (NSDT) | 2-3-3-0 | 3 Havanese | 1-0-0-2 | 1:45pm – TERRIER GROUP | |
| 1 Setter (Irish) | 0-1-0-0 | 4 Italian Greyhound | 0-2-1-0 | | |
| 1 Setter (Irish Red/White) | 0-0-1-0 | | 1 Exh. | | |
| 1 Spaniel (Clumber) | 0-1-0-0 | 2 Maltese | 2-0-0-0 | | |
| 3 Spaniel (EngSpringer) | 0-1-2-0 | 1 Miniature Pinscher | 0-0-0-1 | | |
| 1 Spaniel (Irish Water) | 1-0-0-0 | 2:30pm | | | |
| 6 Spaniel (AmCocker) | 2-3-1-0 | 11 Papillon | 4-3-1-3 | | |
| 3 Spaniel (EngCocker) | 1-1-1-0 | 3 Pekingese | 1-0-1-1 | | |
| 2:45pm – SPORTING GROUP | | 10 Pomeranian | 1-8-1-0 | | |
| | | 6 Pug | 0-4-2-0 | | |
| | | 2 Toy Fox Terrier | 0-2-0-0 | | |
| | | 4 Yorkshire Terrier | 1-3-0-0 | | |
| | | 4:00pm – TOY GROUP | | | |
| <i>(continued @ top of next column)</i> | | <i>(continued @ top of next column)</i> | | <i>(more assignments on reverse side)</i> | |

AULD LANG SYNE DOG ASSOCIATION – WEDNESDAY, APRIL 16^h, 2014 (cont'd)

| RING 5 (12) – J LONDONO (51) | | | |
|-------------------------------------|-----------------------------|--|------------------------------------|
| 1:00pm | (NonSporting breeds) | | |
| 2 Bichon Frise | 1-0-1-0 | | |
| 6 Boston Terrier | 3-1-0-2 | | |
| 9 French Bulldog | 3-5-1-0 | | |
| 6 Lhasa Apso | 1-4-0-1 | | |
| 5 Poodle (Miniature) | 3-1-0-1 | | |
| 4 Shiba Inu | 2-1-1-0 | | |
| 4 Tibetan Terrier | 2-2-0-0 | | |
| 1 Am.Eskimo Dog (Std.) | 0-1-0-0 | | |
| | | | TIMED GROUP ORDER |
| 2:30pm | | | <i>(judging in Ring 1)</i> |
| 4 Bulldog | 0-2-2-0 | | 10:45am HOUNDS |
| 1 Dalmatian | 0-0-1-0 | | 11:00am HERDING |
| 2 Keeshonden | 0-1-1-0 | | 11:30am WORKING |
| 7 Poodle (Standard) | 1-4-2-0 | | - LUNCH BREAK - |
| 3:00pm – NONSPORTING GROUP | | | 1:45pm TERRIERS |
| | | | 2:45pm SPORTING |
| | | | 3:00pm NON-SPORTING |
| | | | 4:00pm TOYS |
| | | | |
| | | | |
| | | | <i>- followed by -</i> |
| | | | Best in Show P Bruce |
| | | | Reserve Best in Show “ “ |
| | | | Best Puppy in Show “ “ |
| | | | Bred By In Show “ “ |
| | | | |

Eukanuba 

CANADIAN
DOG  **Fancier**

AULD LANG SYNE DOG ASSOCIATION - THURSDAY – April 17th, 2014

| RING 2 (16) – MS P BRUCE (50) | | RING 2 – MS P BRUCE (cont'd) | | RING 4 – S BARKEY (cont'd) | |
|-----------------------------------------|--------------------------|-----------------------------------------|-----------------------|-------------------------------------|-----------------------------|
| 9:00am | <i>(Hound breeds)</i> | 2:30pm | | 10:30am | |
| 6 Whippet | 1-4-1-0 | 13 Retriever (NSDT) | 4-4-4-0 | 1 Affenpinscher | 1-0-0-0 |
| 1 Pet.Bas.Grif.Vendeen | 0-0-0-1 | | 1 Vt.(F) | 15 Cavalier King Charles | 5-7-2-0 |
| 1 Drever | 0-0-1-0 | 4 Spaniel (EngSpringer) | 1-2-1-0 | 2 Chinese Crested | 0-1-0-1 |
| 3 Dachshund (SWH) | 0-0-2-1 | 3 Spaniel (EngCocker) | 1-1-1-0 | 1 Coton de Tulear | 1-0-0-0 |
| 1 Dachshund (MWH) | 0-0-0-1 | 6 Spaniel (AmCocker) | 2-3-1-0 | 1 Eng Toy Spaniel | 0-1-0-0 |
| 2 Dachshund (MSH) | 0-1-0-0 | 3:30pm – SPORTING GROUP | | 3 Havanese | 1-0-0-2 |
| | 1 Vt. (F) | | | 2 Maltese | 2-0-0-0 |
| 3 Dachshund (MLH) | 0-1-1-0 | RING 3 (15) – MS L KRAFT (75) | | 5 Yorkshire Terrier | 1-4-0-0 |
| | 1 Vt.(F) | 1:00pm | <i>Working breeds</i> | 11:30am – TOY GROUP | |
| 5 Beagle | 1-2-1-1 | 4 Bernese Mtn Dog | 1-3-0-0 | | |
| 2 Basenji | 0-1-1-0 | 15 Boxer | 5-6-4-0 | RING 4 (13) – MS S BARKEY | |
| 14 Rhodesian Ridgeback | 3-3-5-1 | 1 Bullmastiff | 1-0-0-0 | 1:00pm | <i>(NonSporting breeds)</i> |
| | 2 Vt.(F) | 1 Cane Corso | 0-1-0-0 | 4 Tibetan Terrier | 2-2-0-0 |
| 10:30am | | 11 Doberman Pinscher | 0-5-3-2 | 1 Tibetan Spaniel | 1-0-0-0 |
| 1 Saluki | 0-0-0-1 | | 1 Exh. | 4 Shiba Inu | 2-1-1-0 |
| 1 Greyhound | 0-1-0-0 | 2 Great Dane | 2-0-0-0 | 4 Poodle (Miniature) | 2-0-0-1 |
| 1 Finnish Spitz | 0-1-0-0 | 1 Mastiff | 1-0-0-0 | 6 Lhasa Apso | 2-3-0-1 |
| 2 Deerhound (Scottish) | 1-0-0-1 | 2:30pm | | 9 French Bulldog | 3-5-1-0 |
| 3 Coonhound (Blk/Tan) | 1-1-1-0 | 7 Newfoundland | 3-1-3-0 | 6 Boston Terrier | 3-1-0-2 |
| 4 Afghan Hound | 1-2-1-0 | 5 Portuguese Water Dog | 1-3-1-0 | 2:30pm | |
| 11:00am – HOUND GROUP | | 12 Rottweiler | 6-4-2-0 | 6 Bichon Frise | 1-3-2-0 |
| | | 2 Schnauzer (Giant) | 0-1-1-0 | 1 Am.Eskimo Dog (Std.) | 0-1-0-0 |
| RING 2 (16) – MS P BRUCE (64) | | 8 Schnauzer (Standard) | 3-4-0-1 | 4 Bulldog | 0-2-2-0 |
| 1:00pm | <i>(Sporting breeds)</i> | 3 Siberian Husky | 2-1-0-1 | 1 Dalmatian | 0-0-1-0 |
| 11 Weimaraner | 0-3-4-3 | 1 St.Bernard | 1-0-0-0 | 2 Keeshonden | 0-1-1-0 |
| | 1 Vt.(F) | 2 Kuvaszok | 1-0-0-1 | 7 Poodle (Standard) | 1-4-2-0 |
| 1 Vizsla (Smooth) | 0-1-0-0 | 4:00pm – WORKING GROUP | | 3:20pm – NONSPORTING GROUP | |
| 7 Retriever (Labrador) | 3-3-1-0 | | | | |
| 1 Retriever (Ches.Bay) | 1-0-0-0 | RING 4 (17) – MS S BARKEY (68) | | | |
| 4 Pointer (GSH) | 2-2-0-0 | 9:00am | <i>(Toy breeds)</i> | RING 4 (1) – MS S BARKEY (8) | |
| 3 Retriever (Flat Coat) | 0-2-1-0 | 6 Pug | 0-4-2-0 | 4:00pm | <i>(Terrier breed)</i> |
| 1 Spaniel (Clumber) | 0-1-0-0 | 1 Miniature Pinscher | 0-0-0-1 | 8 Schnauzer (Miniature) | 1-4-3-0 |
| 1 Barbet | 0-0-1-0 | 4 Italian Greyhound | 0-2-1-0 | 4:20pm – TERRIER GROUP | |
| 6 Retriever (Golden) | 1-2-1-2 | | 1 Exh | | |
| 1 Setter (Irish) | 0-1-0-0 | 4 Chihuahua (SC) | 2-1-0-1 | | |
| 1 Setter (Irish Red/White) | 0-0-1-0 | 2 Chihuahua (LC) | 0-1-0-1 | | |
| 1 Spaniel (Irish Water) | 1-0-0-0 | 2 Toy Fox Terrier | 0-2-0-0 | | |
| | | 10 Pomeranian | 1-8-1-0 | | |
| | | 8 Papillon | 4-2-1-1 | | |
| | | 1 Pekingese | 1-0-0-0 | | |
| <i>(continued @ top of next column)</i> | | <i>(continued @ top of next column)</i> | | <i>(continued on reverse side)</i> | |

AULD LANG DOG ASSOCIATION – THURSDAY, APRIL 17th, 2014 (cont'd)

| RING 5 (9) – J LONDONO (45) | | RING 6 (11) – MS A FRANCO (23) | | | |
|-------------------------------------------|-------------------------|---------------------------------------|-------------------------|-------------------------------------------------------------|--------------------|
| 1:00pm | (Herding breeds) | 1:00pm | (Terrier Breeds) | | |
| 4 Welsh Corgi (Pem.) | 1-2-0-0 | 1 Airedale Terrier | 0-0-0-1 | | |
| | 1 Vt. (M) | 1 Border Terrier | 0-1-0-0 | | |
| 18 Shetland Sheepdog | 3-6-3-5 | 1 Bull Terrier (Miniature) | 0-0-1-0 | | |
| | 1 Vt.(F) | 1 Cairn Terrier | 0-0-1-0 | | |
| 1 Polish Lowland Sheepdog | 0-0-1-0 | 1 Fox Terrier (Smooth) | 1 Vt.(M) | ORDER OF GROUP JUDGING <i>(judging in Ring 1)</i> | |
| 2 Norwegian Buhund | 0-1-0-0 | 1 Fox Terrier (Wire) | 1-0-0-0 | | |
| | 1 Exh. | 3 Norwich Terrier | 0-2-1-0 | | |
| 1 Iceland Sheepdog | 0-0-1-0 | 2 Scottish Terrier | 1-1-0-0 | 11:00am | HOUNDS |
| 4 German Shepherd | 1-2-0-1 | 2 Staffordshire Bull Terr | 0-1-1-0 | 11:30am | TOYS |
| 8 Bouvier des Flandres | 3-2-2-0 | 3 Welsh Terrier | 0-2-1-0 | - LUNCH BREAK - | |
| | 1 Vt.(M) | 7 West Highland White | 4-2-1-0 | 2:50pm | HERDING |
| 2:30pm | | | | 3:20pm | NONSPORTING |
| 5 Belgian Shepherd | 2-2-0-1 | | | 3:45pm | SPORTING |
| 2 Australian Shepherd | 0-2-0-0 | | | 4:00pm | WORKING |
| 2:50pm – HERDING GROUP | | | | 4:20pm | TERRIERS |
| | | | | | |
| | | | | Best Veteran in Show | L Kraft |
| | | | | Best in Show | “ “ |
| | | | | Reserve Best in Show | “ “ |
| | | | | Best Puppy in Show | “ “ |
| PUPPY SWEEPSTAKES | | | | | |
| <i>during the lunch break (12:00Noon)</i> | | | | | |
| | | | | | |
| RING 2 – DAWNE DEELEY (12) | | | | | |
| 3 – Junior Puppy Females | | | | | |
| 9 – Senior Puppy Females | | | | | |
| BEST IN SWEEPSTAKES | | | | | |
| | | | | | |
| RING 3 – JANINE STARINK (9) | | | | | |
| 3 – Junior Puppy Males | | | | | |
| 6 – Senior Puppy Males | | | | | |
| | | | | | |

Eukanuba 

CANADIAN
DOG Fancier